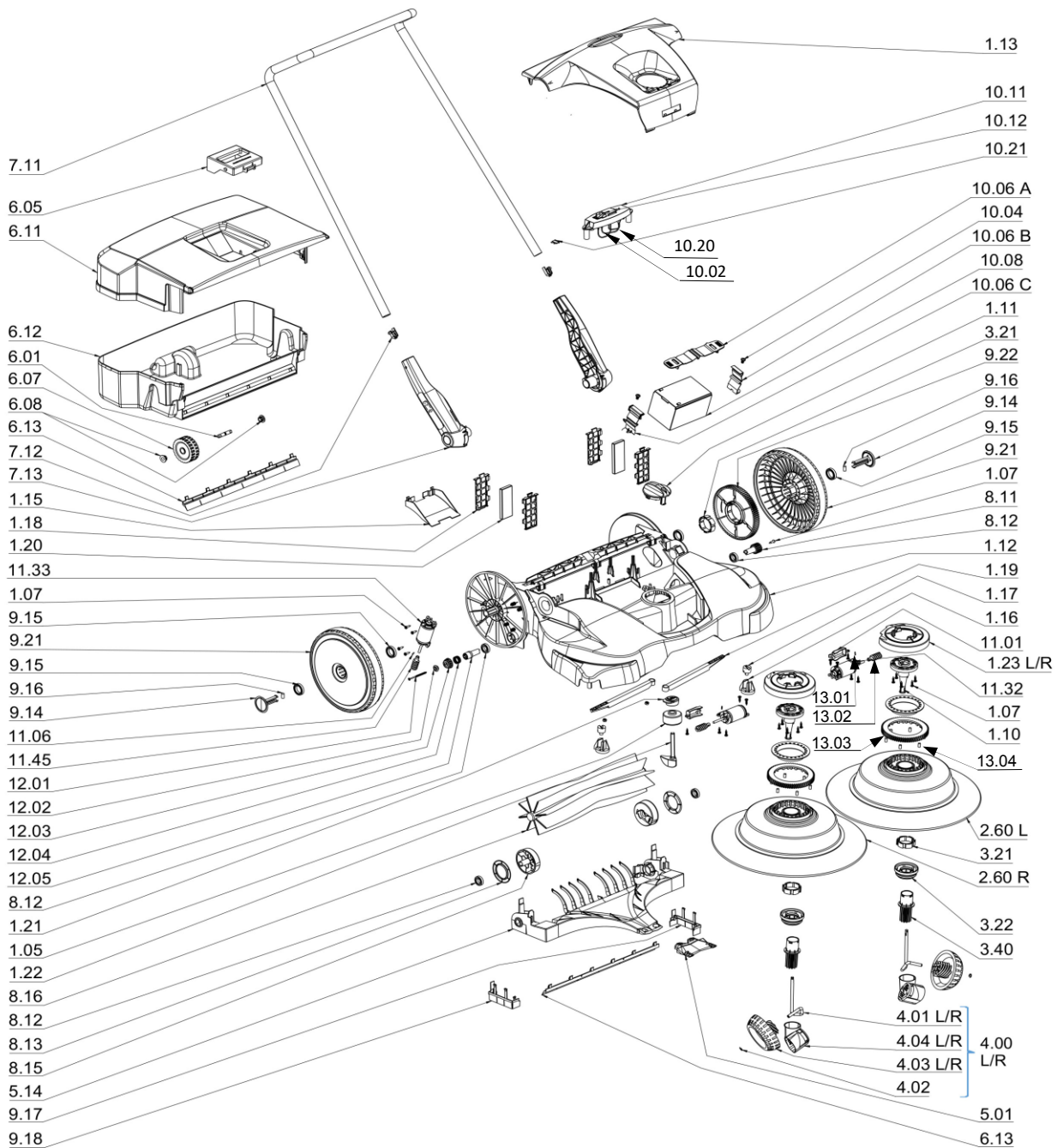


Haaga 697 iSweep, Art.-Nr.: 101002
 Haaga 697 plus iSweep, Art.-Nr.: 100180
 Stand 08-23

ab/from SN 15/2019 990375

ELECTROSTAR GmbH
 73061 Ebersbach/Fils



heupel Reinigungstechnik GmbH

Gottlieb Daimler Str. 6
 88214 Ravensburg
 email: info@heupel-gmbh.de
www.heupel-gmbh.de

Tel: (049) 0751 - 35905-3
 Fax: (049) 0751 - 35905-59

Shop: www.heupel-shop.de

Heupel - Reinigungstechnik - Beratung, Verkauf, Service, alles aus einer Hand.



haaga 697 iSweep, Art.-Nr.: 101002					
haaga 697plus iSweep, Art.-Nr.: 100180					
Pos.-Nr. Item-No.	Benennung Name	Bestell-Nr. art-No.	alte Haaga-Nr. old Haaga no.	PG PG	
1.07; 1.10; 1.16; 1.17; 3.40	Set mechanischer Antrieb X97	set mechanical drive X97	456911	000007; 000630; 490302; 600116; 600117; 401110	23
8.11; 8.12; 8.13; 8.15; 12.05	Set Walzenaufnahme 375/XX7	set roller adapter 375/XX7	456935	400817; 400815; 400812; 400811	16
9.14-9.16; 9.21; 9.22; 3.21	Set Rad XX7	set wheel XX7	452159	400916; 400915; 470311; 600921; 606920; 606914	26
9.14; 9.16	Set Radhalter XX7	set wheel holder XX7	452173	606914; 400916	15
4/00 L/R	Set Schrägradsatz X97	oblique wheel set X97	451473	600411	33
8.12; 12.01- 12.05	Set E-Antrieb KW 6XX	set washer pinion with ball bearing	452333	501201; 501202; 501204; 501205; 400812; 501209	23
7.13	Set Griffbeschlag XX7 neutral	moulded recess Set X77 neutral	456959	600714	19
5.01	Kehrlippe Ersatz	sweeping lip spare	457024	000501	13
2.60 R/L	Set Tellerbesensatz 697 LK	disc broom kit 697	451428	501200	42
3.21; 3.22	Set Kupplung 375/4XX/6XX	set coupling 375/4XX/6XX	452135	470311; 470321	19
1.18; 1.20	Set Filter	set filter	452265	600120; 606118	10
1.12; 1.15	Set Rahmen 497/697	Frame Kit 497/697	452241	600115; 461014; 600112	37
6.05; 6.11; 6.12; 6.01; 6.07; 6.08; 6.13	Set Kehrgutbehälter 4XX6XX	waste tank kit 477/677/697	457116	605400	40
5.14	Set Kehrplatte 4XX/6XX	board kit 4XX/6XX	457161	600514	23
1.11; 1.19	Set Verstellknopf X97	adjusting button kit X97	452203	605111; 600119	21
6.05	Set Behältergriff	tank handle kit	457284	000605	12
1.13	Set Haube 677	cover 677	458960	677126	23
8.16	Set Kehrwalze	set brush roll	458946	400816	23
6.13; 9.17; 9.18	Set Dichtlippen	set seal XX7	452234	600613; 600614; 600615	17
1.21; 1.22; 1.05	Set Auslenkelement	set edge guiding roll	452272	605121; 605122; 000005	18
7.12	Set Rastfeder Haaga	set spring clip	458731	401712	7
1.23L; 1.23R	Set Schutzringe 697	set protection rings	406671	600201; 600202	12
10.04; 10.06A/B/C	Set Batterie Halterung	set battery holder	452326	400118; 501050; 501051; 501052	18
11.32; 11.45; 11.06; 11.01	Set Motor Tellerbesen	set motor circular broom	459103	671675; 670105; 501106; 501101	33
11.33; 11.45; 11.06	Set Motor Walze	set motor worm	456461	671685; 670105; 501106	33
10.8	Batterie 12V 12Ah	set battery 12V 12Ah	456447	501008	31
10.8	Batterie 12V 14Ah	set battery 12V 14Ah	456416	601008	38
10.21	Set Sicherung	set fuse	452296	602020; 602030; 501024	19
10.11	Set Schalterplatte	set switch plate compl.	427553		40
10.12	Set Schutzkappe Ladebuchse	set cap for loading socket	459110	501042	11
7.11; 7.12	Set Schiebebügel 4XX/6XX	set Handle 4XX/6XX	451190	600700; 401712	28
6.07; 6.08; 6.01	Set Profilreifen 80mm	set tread wheel	452197	000607; 000608	16
9.15	Set Kugellager 10 St.	set ball bearing 10 pcs.	459622	400915	17
8.12	Set Kugellager 10 St.	set ball bearing 10 pcs.	459615	400812	15
	Set Elektronik	set battery discharge protect.	455136	601038	26
	Set Ladegerät XLR	set charger XLR	459097	500020	38
10.02	Set Ladebuchse XLR m. Kabel	set charging socket XLR w. cable	466484		23
10.20	Set Elektronik Tiefentladung PLC	set battery discharge protect.	455136	637495	26
13.01; 13.02; 13.03; 13.04	SET SCHNECKENRAD Z=68	set worm wheel T=68	467146	2x713595; 2x719337; 12x720760; 2x 713052; 2x713083; 714110	31